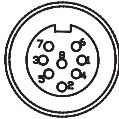



CC-059-xxx-FM

AISG Control Cable

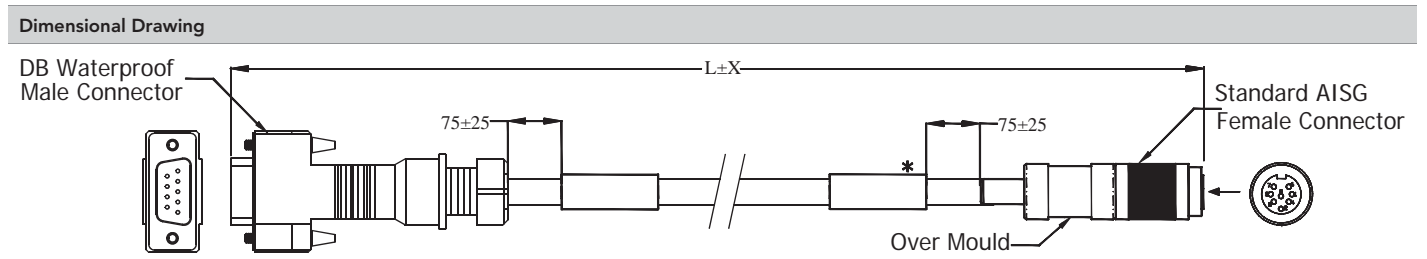
| Ordering Options | | | |
|---|---|------------------|---|
| This AISG Control Cable is available in lengths between 50 cm -100 m. When ordering, replace "xxx" in model number with desired length. See examples below. | | | |
| Length | Model Number | | |
| 50 centimeter cable length | CC-059-C50-FM | | |
| 5 meter cable length | CC-059-005-FM | | |
| 35 meter cable length | CC-059-035-FM | | |
| 100 meter cable length | CC-059-100-FM | | |
| Connector Characteristics | | | |
| Connectors | Connector A: 1 x 8 pin Female Connector; Straight | | Connector B: 9 Pos D-Sub Solder Male |
| |  | |  |
| Pin Assignment | Connector A | Cable Connection | Connector B |
| | Pin 1 | +12-24 V DC | Pin 1 +12-24 V DC |
| | Pin 2 | NC | Pin 2 NC |
| | Pin 3 | RS485 B | Pin 3 RS485 B |
| | Pin 4 | DC Return | Pin 4 DC Return |
| | Pin 5 | RS485 A | Pin 5 RS485 A |
| | Pin 6 | +12-24 V DC | Pin 6 NC |
| | Pin 7 | DC Return | Pin 7 NC |
| | Pin 8 | NC | Pin 8 NC |
| --- | --- | Pin 9 DC Return | |
| Electrical Characteristics | | | |
| Rated Voltage | 300 V DC | | |
| Current Rating | 5A /+40°C/+104°C | | |
| Insulation Resistance | > 100MΩ | | |
| Contact Resistance | 0.25mm ² 0.0000876 mΩ & 0.75mm 0.000028mΩ | | |
| Mechanical Characteristics | | | |
| Insertion and Withdrawal Forces | 60N | | |
| Coupling Style | Metal Screw Coupling | | |
| Mechanical Operation | 500 Mating Cycles | | |
| Termination Technique | Crimp | | |
| Materials Characteristics | | | |
| Hood | Water-Resistant Hood 9-way | | |
| Wire Gauge (OD) | 6-8 mm AISG Cable | | |
| Housing Material | Die Cast, Nickel Plated | | |
| Dielectric Material | Thermoplastic Material | | |
| Contact Plating | Silver Plated / Gold Plated | | |
| Environmental Characteristics | | | |
| Temperature Range | -40 to +85° C | | -40 to 185° F |
| IP Rating | IP67 | | |



Quoted performance parameters are provided to offer typical, peak or range values only and may vary as a result of normal testing, manufacturing and operational conditions. Extreme operational conditions and/or stress on structural supports is beyond our control. Such conditions may result in damage to this product. Improvements to products may be made without notice.

CC-059-xxx-FM

AISG Control Cable



L = Length; when $L > 3000$, $X = 100$; when $L \leq 3000$, $X = 50$