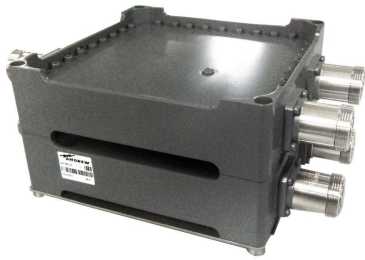


641280-DF-2X



Twin Crossband Coupler, Cellular/900 MHz/DCS 1800/PCS/AWS

OBSOLETE

This product was discontinued on: December 1, 2019

Product Classification

Product Type Coupler

General Specifications

Product Family 641280
Color Gray
Common Port Label COMMON
Modularity 2-Twin
Mounting Pole | Wall
Mounting Pipe Hardware Band clamps (2)
RF Connector Interface 7-16 DIN Female
RF Connector Interface Body Style Long neck

Dimensions

Height 186 mm | 7.323 in
Width 186 mm | 7.323 in
Depth 100 mm | 3.937 in
Ground Screw Diameter 8 mm | 0.315 in
Mounting Pipe Diameter Range 40–160 mm

Electrical Specifications

Impedance 50 ohm
License Band, Band Pass AWS 1700 | CEL 850 | CEL 900 | DCS 1800 | IMT 2100 | LMR

641280-DF-2X

800 | LMR 900 | PCS 1900 | TDD 1900

Electrical Specifications, Common Port

Composite Power, PEP 12000 W

Electrical Specifications, dc Power/Alarm

dc/AISG Pass-through, combiner Branch 1 | Branch 2

dc/AISG Pass-through, demultiplexer Branch 1 | Branch 2

Lightning Surge Current 15 kA

Lightning Surge Current Waveform 8/20 waveform

Electrical Specifications

Sub-module	1 2	1 2	1 2
Branch	1	2	2
Port Designation	LOW BAND	HIGH BAND	HIGH BAND
License Band	[4, 5, 11, 12]	[2, 6, 8, 13, 18]	[2, 8]

Electrical Specifications, Band Pass

Frequency Range, MHz	806–960	1710–2160	2160–2170
Insertion Loss, maximum, dB	0.15	0.2	0.2
Return Loss, minimum, dB	20	20	16
Isolation, minimum, dB	47	47	47
Input Power, RMS, maximum, W	500	275	275
Input Power, PEP, maximum, W	12000	6000	6000
3rd Order PIM, maximum, dBc		-153	-153
3rd Order PIM, typical, dBc	-153	-153	-153
3rd Order PIM Test Method	2 x 20 W CW tones	2 x 20 W CW tones	2 x 20 W CW tones

Environmental Specifications

Operating Temperature -40 °C to +65 °C (-40 °F to +149 °F)

Relative Humidity Up to 100%

Corrosion Test Method IEC 60068-2-11, 30 days

Ingress Protection Test Method IEC 60529:2001, IP68

Packaging and Weights

Included Mounting hardware

641280-DF-2X

Volume 3.4 L
Weight, net 5 kg | 11.023 lb

Regulatory Compliance/Certifications

Agency	Classification
ISO 9001:2015	Designed, manufactured and/or distributed under this quality management system

