

CMAX-EXT-CPUSEI53

Cell-Max™ Low PIM Directional Outdoor Antenna, 698–960 MHz and 1710–2700 MHz

Product Classification

Product Type	Over-the-head stadium antenna
Product Brand	Cell-Max™

General Specifications

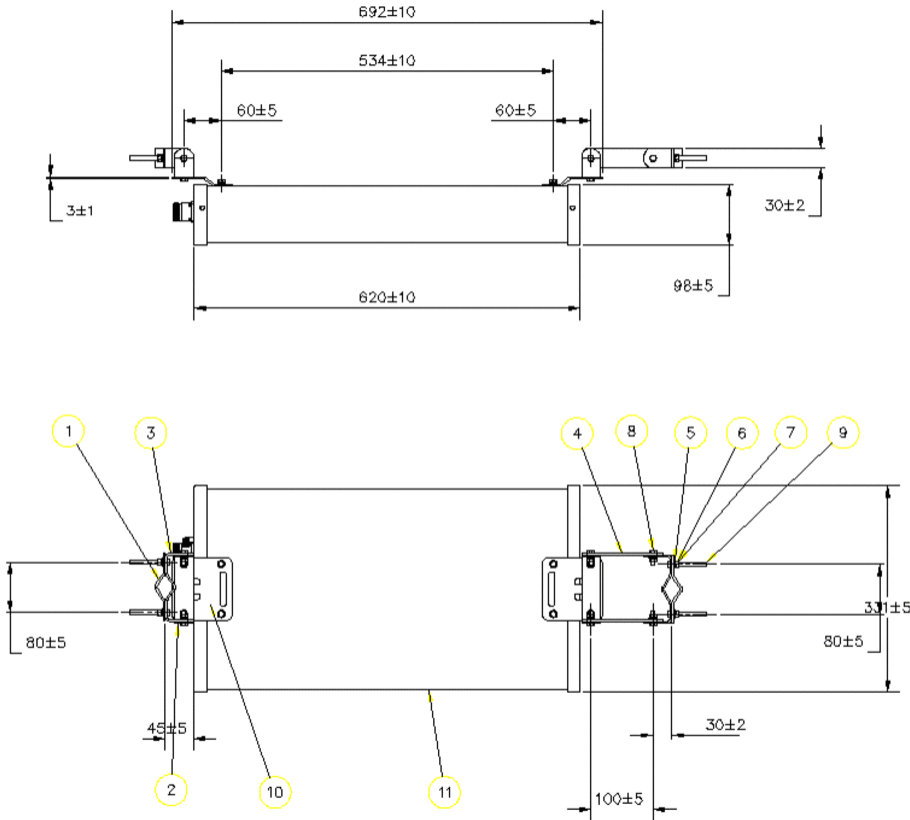
Application	Indoor/Outdoor
Antenna Type	Directional
Antenna Array Characteristic	SISO
Polarization	Vertical
Color	White
Mounting	Poles between 25–60 mm with supplied clamps
Number of Ports	1
Radome Material	PVC, UV resistant
RF Connector Interface	7-16 DIN Female

Dimensions

Width	331 mm 13.032 in
Length	620 mm 24.409 in
Depth	98 mm 3.858 in

CMAX-EXT-CPUSEI53

Outline Drawing



Electrical Specifications

Impedance	50 ohm
Lightning Protection	dc Ground
Operating Frequency Band	1710 – 2700 MHz 698 – 960 MHz

Electrical Specifications

Frequency Band, MHz	698–800	800–960	1710–2200	2200–2700
Gain, dBi	10	11	11	11
Beamwidth, Horizontal, degrees	68	60	60	52
Beamwidth, Vertical, degrees	30	28	30	30

CMAX-EXT-CPUSEI53

Front-to-Back Ratio at 180°, dB	18	18	20	20
VSWR Return loss, dB	1.8 10.9	1.8 10.9	1.8 10.9	1.8 10.9
PIM, 3rd Order, 2 x 20 W, dBc	-153	-153	-153	-153
Input Power per Port, maximum, watts	100	100	100	100

Mechanical Specifications

Wind Loading at Velocity, maximum	154.2 lbf @ 216 km/h 686.0 N @ 216 km/h
Wind Speed, maximum	216 km/h 134.216 mph

Environmental Specifications

Operating Temperature	-40 °C to +60 °C (-40 °F to +140 °F)
Relative Humidity	Up to 100%
Ingress Protection Test Method	IEC 60529:2001, IP65

Packaging and Weights

Width, packed	350 mm 13.78 in
Depth, packed	160 mm 6.299 in
Length, packed	830 mm 32.677 in
Packaging quantity	1
Weight, gross	7.4 kg 16.314 lb
Weight, net	4.7 kg 10.362 lb

Regulatory Compliance/Certifications

Agency	Classification
CHINA-ROHS	Below maximum concentration value
ISO 9001:2015	Designed, manufactured and/or distributed under this quality management system
REACH-SVHC	Compliant as per SVHC revision on www.commscope.com/ProductCompliance
ROHS	Compliant

