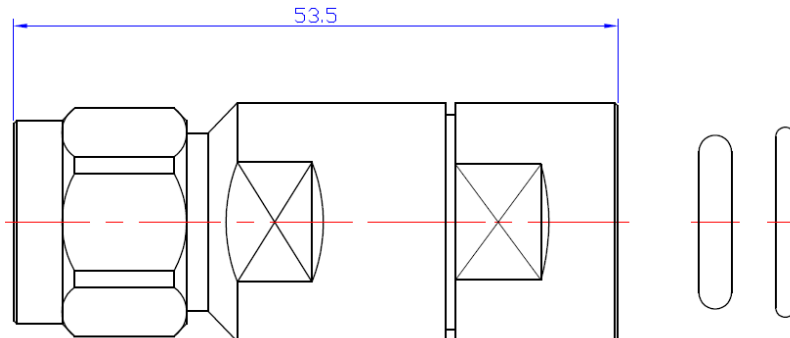




Product Specifications

NM-1-2L



1 Product Structure

Designation	Material	Plating
1 Inner Conductor	Bronze	Silver-plated
2 Insulator	PTFE	-
3 Body	Brass	Ternary alloy
4 Gaskets	Silicone Rubber	-
5 Nut	Brass	Nickel-plated

2 General Specifications

Interface	N Type
Standards	IEC 60169-16
Body Style	Straight
Durability	≥ 500

3 Electrical Specifications

Impedance	50 Ω
Operating Frequency Band	DC – 3 GHz
Insertion Loss, Typical	≤ 0.05dB
VSWR	≤1.1@DC~2.5Ghz; ≤1.15@2.5~3Ghz
PIM	≤ -155dBc
Dielectric withstanding voltage	2500V
Contact Resistance	Inner Conductor ≤ 1.0mΩ Outer Conductor ≤ 0.25mΩ
Insulation Resistance	≥ 5000MΩ

4 Environment Specifications

Operating Temperature	-40°C to +85°C
Immersion Depth	0.5 m
Immersion Test Mating	Mated
Immersion Test Method	IEC 60529:2001, IP67
Corrosion Test Method	IEC 60068-2-52 48h
Damp Heat Resistance Test Method	IEC 61169-1, Sub-clause 9.4.3
Thermal Shock Test Method	IEC 61169-1, Sub-clause 9.4.4
Vibration Test Method	IEC 61169-1, Sub-clause 9.3.3
Mechanical Shock Test Method	IEC 60068-2-27



Product Specifications

5 Marking and Package Requirements

According to the Packaging Specifications or customer's requirements

6 Banned and Restricted Substances

RoHS 2011/65/EU

Compliant by Exemption

7 Document Revision Information

Revision

Description

A0

First revision